

The Swiss edu-ID in a Nutshell

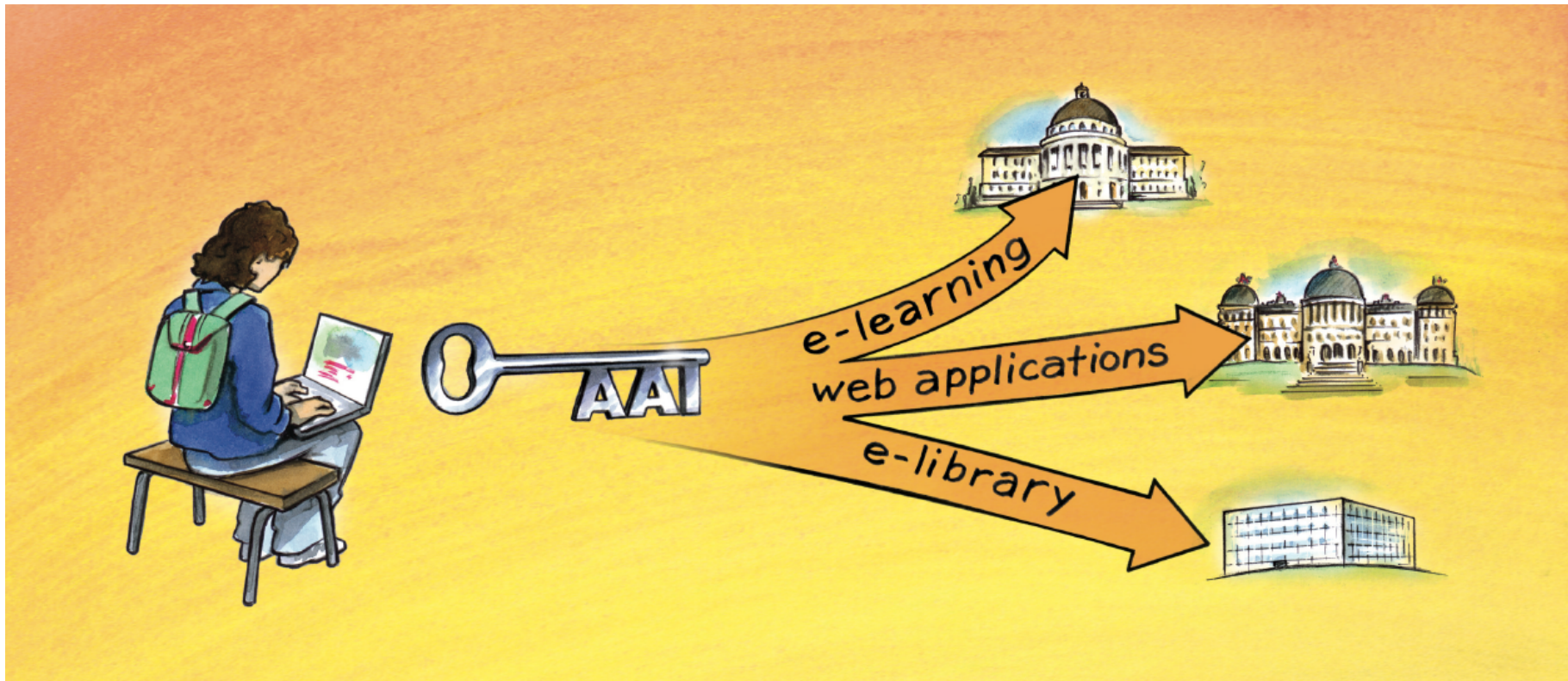


SWITCH

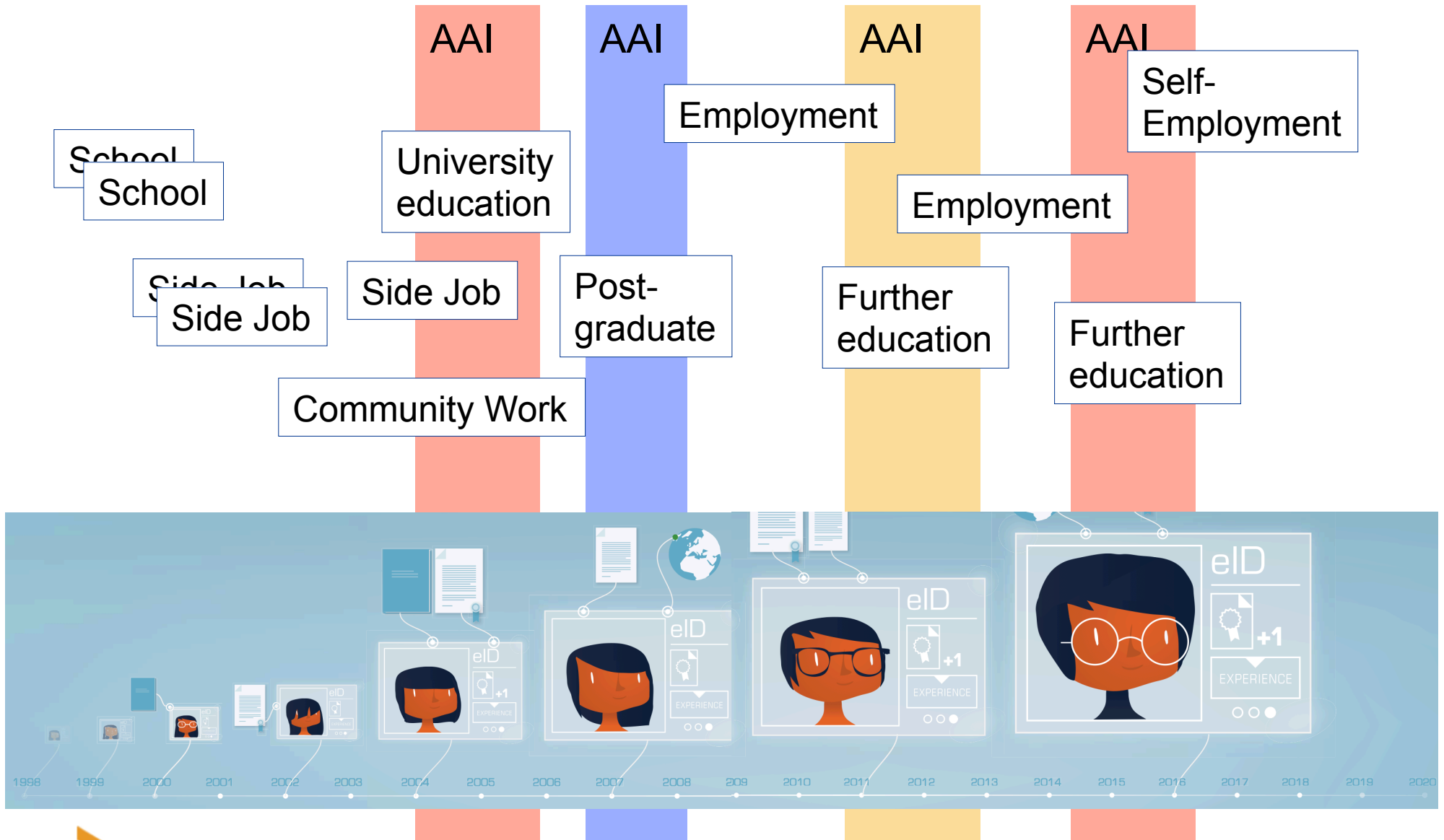
Swiss edu-ID
swisseduid@switch.ch

The success of SWITCHaai

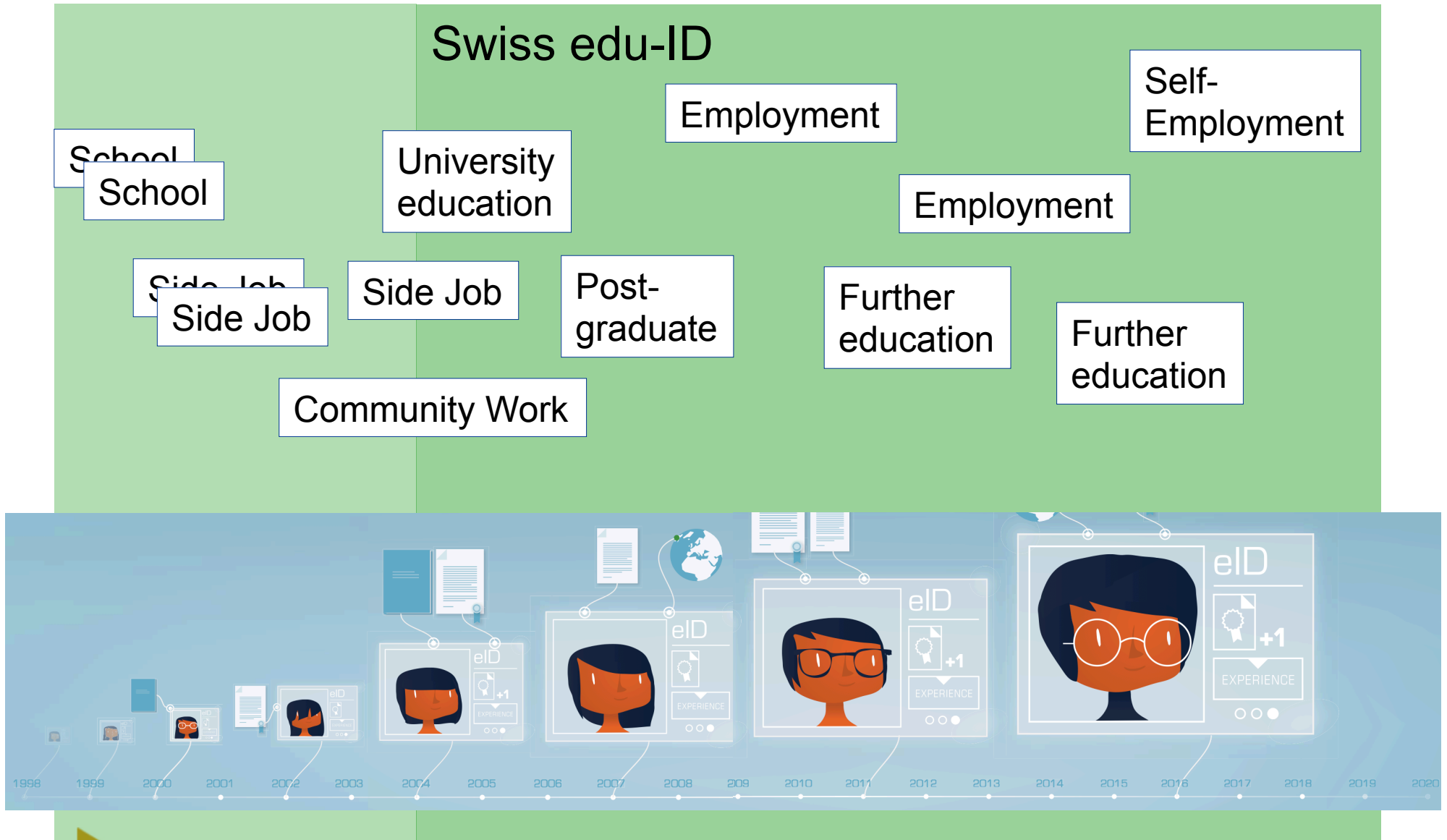
Enter higher education, get one key, access many resources



But what happens over time?



Doesn't this look much nicer?



The (overloaded) term “Swiss edu-ID”

- The concept “Swiss edu-ID”
 - In preparation for the CUS P-2 programme a “substrategy identity management” was written by an inter-university working group.
 - This paper proposed the concept of the “Swiss edu-ID” and a high-level roadmap for its implementation
- The project “Swiss edu-ID”
 - SWITCH initiated the CUS P-2 projects “Swiss edu-ID” and “Swiss edu-ID phase II” to implement the roadmap of the substrategy
- The service “Swiss edu-ID”
 - The services “Swiss edu-ID V1.0” and “Swiss edu-ID V2.0” are milestones on that roadmap

Swiss edu-ID concept corner stones

- Persistency:
 - Built to survive organisational affiliations
- User-centrism:
 - User issues his/her identity in a light-weight self-registration process
 - User brings his/her identity to the university/employer (if pre-existing)
 - User decides whether to pass on data (but usually not on its contents!)
- Organisational backing:
 - Organisations add or validate attributes of identities
- Openness:
 - Open to members of Swiss academia and people with relation to it
- Scalable quality:
 - Allow for low quality: Yes, this is a feature!
 - Foresee validation processes to increase the quality level
 - Offer quality transparency: relying parties can base decisions on quality level
- Support mobile environments and non-web use cases

SWITCHaai vs. Swiss edu-ID

	SWITCHaai	Swiss edu-ID
Identity framework	Role-linked, organisation-centred federated identity	Persistent, user-centric federated identity
Identity lifetime	Limited to period of organisational affiliation	Persistent identity
Number of identities per individual	One identity for each organisational affiliation of an individual	One unique identity per individual
Role of organisations	Identity provider & Service provider	Attribute authority & Service provider
Users	Members of Swiss academia	Members of Swiss academia and people with relation to academic institutions

The Swiss edu-ID project roadmap

- Project “Swiss edu-ID” (finished July ’15)
 - Submitted by SWITCH to CUS P-2 competition in March ’14, approved and started mid-2014
 - Main goal: Implementing the “Swiss edu-ID V1.0” service
- Project “Swiss edu-ID phase II” (started Aug ’15)
 - Submitted by SWITCH to CUS P-2 competition in Feb ’15, approved in June ’15 and started Aug ’15, runtime until end 2016
 - Main goal: Implementing the “Swiss edu-ID V2.0” service
- Swiss edu-ID 2017-2020
 - Envisaged follow-up collaboration project
 - Main goal: migrate from SWITCHaai to Swiss edu-ID

“Swiss edu-ID” project: main deliverables

- Pilot service Swiss edu-ID V1.0 -> *Lukas Hämmerle*
- Pilot projects/Use Cases -> *Rolf Brugger*
- Community Anchoring -> *Petra Kauer-Ott*
- Market overview: solution framework for Swiss edu-ID
 - Shibboleth (main open source SW-component of SWITCHai and Swiss edu-ID V1.0) and commercial products are fit for the purpose
 - Successfully tested one of the commercial products in a PoC
 - Main weakness of Shibboleth is its lack of a solid roadmap for supporting mobile and non-web use cases
 - We stay with Shibboleth for Swiss edu-ID V2.0
 - To be revisited once mobile and non-web use cases gain ground
- Support for mobile environment/non-web -> *Rolf Brugger*