

# Working Groups

Swiss edu-ID – a joint effort



# SWITCH

Petra Kauer-Ott  
[petra.kauer@switch.ch](mailto:petra.kauer@switch.ch)

Berne, August 13 2014

# Goals

## Record the community's needs as to

- user-centrism
- specific IdM processes
- interoperability
- implementation of Swiss edu-ID

## and transfer them to exemplary applications:



**Pilots**

Later we will look also for Pilot Attribute Authorities !

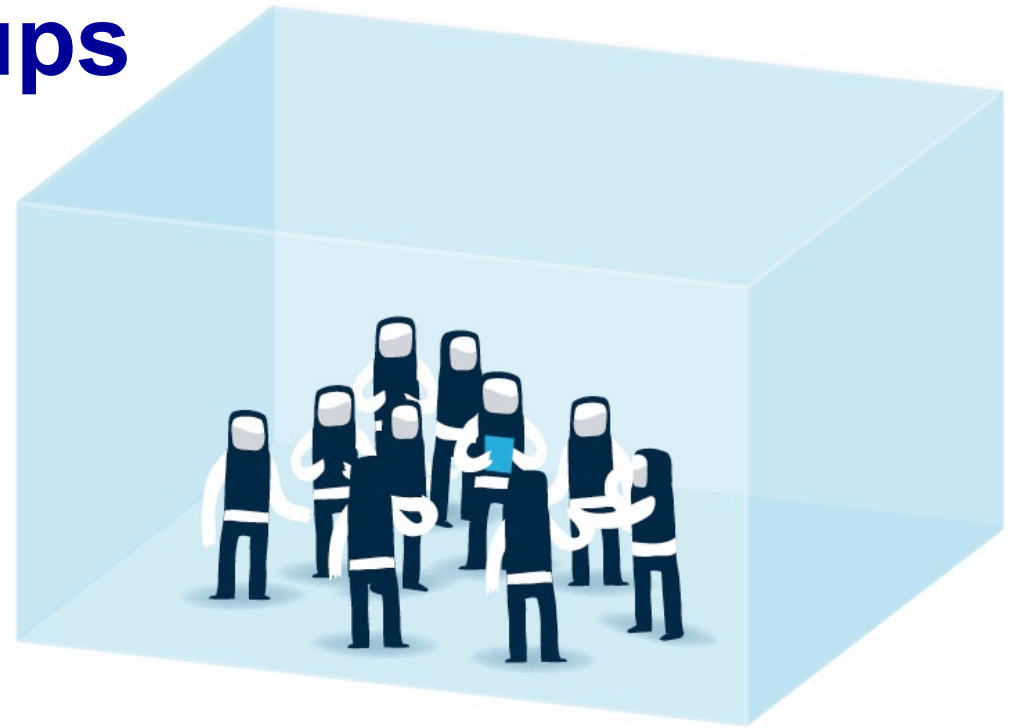
# Pre-Project Work

3 groups already active:

- **High Level Architecture WG:**  
ETHZ, ETH Library, UNIBAS, UNIGE, UNIL, UNISG, USI, UZH, SWITCH
- **AAI Attribute Task Force:**  
Discussion about eduPerson, swissEduLibraryPerson, ORCID, Swiss edu-ID/Identifier
- **Identifier Specification WG:**  
BFH, ETH library, SWITCH

# Call Working Groups

- A. Processes**
- B. Regulations**
- C. ORCID**
- D. Mobile App Support**
- E. Governance Model**
- F. Business Model**



# A. Processes WG



<p><b>Work</b></p>	<p><b>Profile of participants</b></p>
<p><b>Remarks</b></p>	<p><b>Workload and timeframe</b></p>

## B. Regulations WG



<p><b>Legal framework</b></p> <ul style="list-style-type: none"><li>• identify regulations and discuss/clarify relevant questions within institutions</li><li>• define policies institutions need</li><li>• bring in institutional experiences with end user policies</li></ul>	<p><b>Member Profile:</b></p> <ul style="list-style-type: none"><li>• legal know-how</li><li>• overview of regulations, policies and IdM-related processes within institution</li><li>• contacts with legal representatives</li><li>• work at cutting point between technical and administrative tasks</li></ul>
<p>Group will be accompanied by legal experts</p>	<p>2 days, Nov. – May 2 meetings, document review, feedback</p>

## C. ORCID WG



<b>ORCID integration</b> <ul style="list-style-type: none"><li>• describe current and possible future use of ORCID</li><li>• describe processes for integration at institutions &amp; possibilities of ORCID provisioning for institutional processes</li></ul>	<b>Member Profile:</b> <ul style="list-style-type: none"><li>• institutions considering implementation of ORCID</li><li>• involved in development of systems and services with relation to ORCID</li><li>• librarians</li><li>• managers and developers of publication systems</li></ul>
→ further project steps → <b>pilots (call 15.2.2015)</b>	1-2 days, Oct. – Jan. Meetings, ev. visits, feedback

# D. Mobile App Support WG



## Better mobile support

- describe requirements of institutions/users
- discuss ideas for better mobile support
- evaluate existing solutions

## Member Profile:

- experience with integration of mobile solutions
- mobile developers and integrators with knowledge about protocols as OAuth2
- IdM and application managers
- researchers (in the field of mobile technologies)

→ further project steps  
→ **pilots (call 15.2.2015)**

1-2 days, Oct. – Jan.  
2 meetings, feedback



# E. Governance Model WG



<b>Governance documents</b> <ul style="list-style-type: none"><li>• act out cases to check usability and robustness of governance model</li><li>• identify points to be adapted/improved</li><li>• discuss issues with legal representatives at institution</li></ul>	<b>Member Profile:</b> <ul style="list-style-type: none"><li>• knowledge of governance models</li><li>• familiar with SWITCH governance and governance of AAI</li></ul>
→ some important changes of roles (IdP, AA, user)	1 day, Q1 2015 1-2 meetings in person

# F. Business Model WG



<b>Business models</b> <ul style="list-style-type: none"><li>• discuss and evaluate different model options</li></ul>	<b>Member Profile:</b> <ul style="list-style-type: none"><li>• good knowledge of business models</li><li>• background knowledge about SWITCH and tariff</li></ul>
→ medium- & long-term perspectives	Ca. ½ day, Q2 2015 1 meeting in person

# Participate !

Please distribute the call within your institution!

Use the **feedback form** for comments, working group subscriptions and pilot suggestions.

Details about call:  
[http://swit.ch/eduid\\_workgroups](http://swit.ch/eduid_workgroups)

Contact:  
[swisseduid@switch.ch](mailto:swisseduid@switch.ch)



# Outlook

- Project Updates at info events of SUK P-2:
  - Sept. 11, 2014 in Lausanne
  - Sept. 25, 2014 in Bern
- October/November : first working group meetings
- February 15 2015 next call SUK P-2



# Call: Swiss edu-ID - the next generation Identity Management for Swiss HEI's

Would you like to play a part in the next phase of AAI's evolution towards a user-centric identity management solution?

We are looking for members of universities, libraries and research institutions to help us create a new digital identity known as the Swiss edu-ID.

Contribute to one of the working groups with your expertise and practical know-how (details: [http://swit.ch/eduid\\_workgroups](http://swit.ch/eduid_workgroups)):

- Processes
- Regulations
- ORCID
- Mobile App Support
- Governance Model
- Business Model

Please contact us and let us know for what working group with an open call you would volunteer: [swisseduid@switch.ch](mailto:swisseduid@switch.ch)

## The next-generation Swiss Educational Identity Management

### Consider future needs & expectations

Technological change increasingly impacts the behaviour and working environments of students, researchers, life-long learners and university staff. While in the past the individuals' working environment was mostly preset and specified by the organization they were affiliated with, we can now observe a trend towards more self-reliant personalities. They tend to choose their individual set of tools and they autonomously develop their skills to manage and protect personal data. In addition to the classical desktop working mode, ubiquitous mobile access to personal and professional data is preferred.

### Substantially extend AAI towards a user-centric IdM

To address these trends SWITCH is suggesting a substantial extension of the existing AAI infrastructure. Identity management, which controls access to tools and data is to become more user-centric and less organization-centric.

### Provide a long-living identity

From the perspective of an individual the digital identity is stabilized and sustained. With the first contact of an individual with a higher education institution the individual is assigned a permanent Swiss edu-ID. The barriers for an individual to create a Swiss edu-ID are low. After leaving a university, the Swiss edu-ID will no longer carry role information from that university, but otherwise remain active. The individual can still update personal information on an on-going basis, and will still get access to resources not requiring such role information. Re-entering a university for further education purposes as well as cross-organisational activities are simplified.

### Streamline institutional Identity Management

From the perspective of an organization, identity management is streamlined. New identities do not have to be constructed from scratch, but can be initialized based on existing profile information from an individual's Swiss edu-ID. While AAI is based on a widely decentralized architecture, the Swiss edu-ID is substantially relying on centrally provided services run by SWITCH to operate elements like storage of long-term core attributes, authentication service and interfaces to resources and attribute authorities. Providing high quality attribute information about individuals will remain in the authority of participating organisations, e.g. the universities, as is the case today in AAI.



### Embed new Identity Provider & support identity linking

The central platform of the Swiss edu-ID will become an Identity Provider in the AAI framework and thus maintain full interoperability including interoperation including interoperation. The Swiss edu-ID will allow linking of relevant external identifiers like ORCID. Linking with social media identities will further improve interoperability with popular 3rd party communication and collaboration services.

The Swiss edu-ID will actively seek interoperability with relevant e-Government standards and services nationally, e.g. SuisseID, and internationally, e.g. eID/STORK.

	SWITCHaai	Swiss edu-ID
Identity Provider	Run by each university individually for their current users	One central instance run by SWITCH
Attribute Authority	Run by each university individually for their current users (as part of the IdP)	Run by each university individually for their current and former users
Service Providers	SWITCH Community, Swiss edu-ID partners, interoperation participants	SWITCH Community, Swiss edu-ID partners, interoperation participants

Swiss edu-ID compared to SWITCHaai

### Initial version functional in 2015

An initial version V1.0 of the Swiss edu-ID service with limited capabilities will be operable starting 2015. It will allow individuals to create a long-lived Swiss edu-ID identity. Focus is on students who are soon going to lose their existing SWITCHaai account and on individuals without a strong affiliation with an organisation in the SWITCH Community and therefore without possibility to get a SWITCHaai account.

### Take the next steps

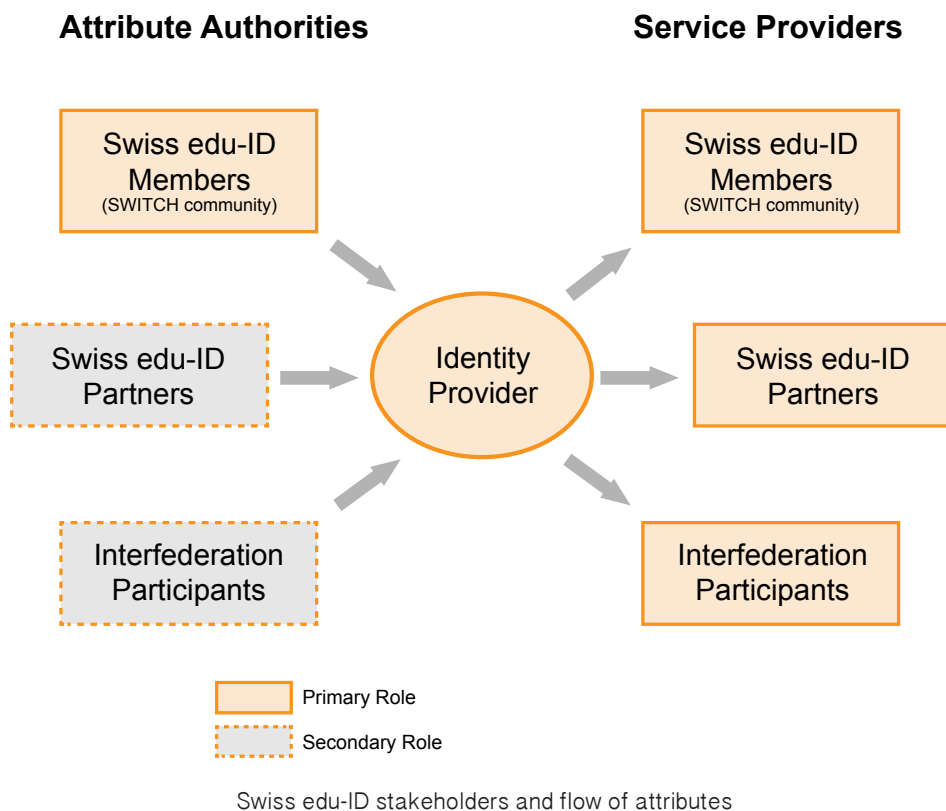
Stakeholder groups will refine the operational framework of the Swiss edu-ID on the basis of the high-level architecture from mid-2014 to mid-2015 and set the cornerstone of the next version 2.0 of the Swiss edu-ID and beyond. Version 2.0 will allow participating organisations to enrich the user attributes and thus make the Swiss edu-ID cover all functionality of SWITCHaai identities with additional longevity.

The main focus in the years 2017 onwards is to increase service adoption. This will also include implementing renewed student registration processes together with all relevant stakeholders.

The program P-2 covers two substantial activities of the “Swiss edu-ID“ project, i.e. the set-up of the initial service version and the refinement of the operational framework in collaboration with the stakeholder groups. Follow-up projects (preferably within the scope of P-2) will be initiated to implement the subsequent steps in this roadmap.

### Call: Participate in working groups & pilots

Interested people are welcome to participate in one of the initiated working groups (please find details at [http://swit.ch/eduid\\_workgroups](http://swit.ch/eduid_workgroups)):



- Processes:** IdM related processes, issuing, interfaces
- Regulations:** existing regulations & policies, needs, user policies
- ORCID:** possible use, integration processes
- Mobile App Support:** requirements, improved support, evaluation
- Governance Model, Business Model**

The integration possibilities will be tested and demonstrated with some pilots. Test candidates should be **web and non-web applications** (e.g. based on OAuth2 or Open ID connect), **mobile applications**, **applications using ORCID**, **other IDs & ID frameworks** (e.g. community IDs, SuisseID, Mobile ID, STORK).

### Assure high quality & extension possibilities

The Swiss edu-ID is built to match the requirements of the SWITCH Community. This means that high security and data protection standards are adopted to gain trust and acceptance. This also means that 3rd party organizations can participate in Swiss edu-ID provided that the SWITCH Community requires it. The proven governance and financing models of the SWITCH Community will be fully applied to Swiss edu-ID.

Contact / News / Registration for working groups: [swisseduid@switch.ch](mailto:swisseduid@switch.ch)

**Events:** Sept. 11 at UNIL and Sept. 25 2014 at UniBE: CUS P-2 Project Update

This flyer is mainly an extract of the “Swiss edu-ID High Level Architecture” document: <http://swit.ch/eduid/SwissEduIDArchitecture.pdf>