

Attribute Release Configuration

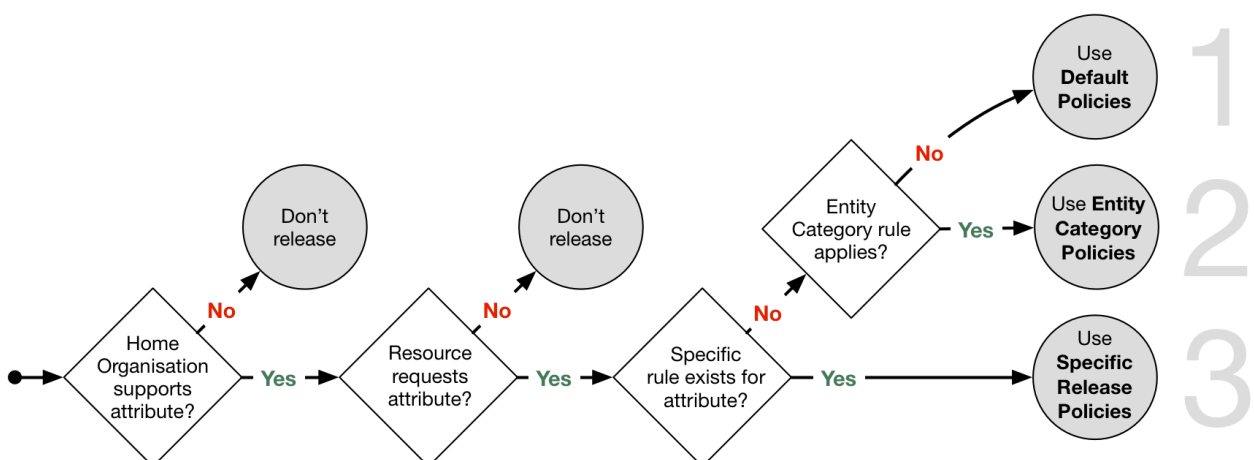
How attributes are released



SWITCH

SWITCHaai Team
aai@switch.ch

Attribute Release Rules



Attribute Release Settings (1)

Resource Registry –
Edit Home Organization Description –
Attribute Release Settings

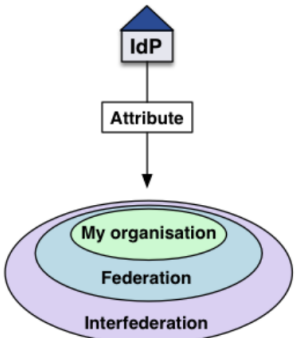
1. Default Policies for Individual Attributes

Individual default Attribute Release Policy rules apply if no Resource Specific Attribute Release Policy rule exists and if the Service Provider is not in one of the above Entity Categories. Only [supported attributes](#) are listed below.

Release Scopes




The release policy rules for individual attributes allow to set one of the following release scopes to which to release an attribute by default. Release attribute to:

- **Nobody**: The attribute is never released except if there is a Resource Specific Attribute Release Policy rule, which overrides all other rules.
- Resources of **My organization** (SWITCH): The attribute is released only to [resources of SWITCH](#), excluding Federation Partner resources.
- Resources in the (SWITCHaa) **Federation**: The attribute is released to all [SWITCHaa resources](#).
- **Interfederation** (e.g. [eduGAIN](#)) resources: The attribute is released to [all interfederation resources](#) as well as to all Resources from the enclosed release scopes. The following attributes are recommended to be released to interfederation resources if they are required:
 - Principal Name (unique identifier)
 - Targeted ID (unique identifier)
 - Affiliation (e.g. staff, student, faculty, affiliate)
 - Scoped affiliation (same as affiliation but domain name appended)
 - E-Mail
 - Display Name (full name)
 - Common Name (same as display name but can be multi-valued)
 - SCHAC Home Organisation (like Swiss Home Organization)
 - SCHAC Home Organisation Type (similar like Swiss Home Organization Type)



Release required attributes to	... desired attributes to
Have a look at the diagram above in order to understand the effects of the different policy choices below.		

SWITCHaa Attributes

Affiliation (**core**)  interfederation resources  SWITCHaa resources 

Attribute Release Settings (2)

2. Entity Category Policies

Entity Category Policies apply whenever a Resource claims to meet the category's requirements. The claim is part of the Service Provider's metadata. Entity Category Policies have higher priority than the default release policies for individual attributes. However, they have lower priority than the Resource Specific Attribute Release Policy rules. Together with a user attribute release consent module (i.e. [uApprove](#)), attribute release based on the entity categories below should provide enough confidence from a data protection point of view to release the requested attributes also to Interfederation-enabled resources abroad.

GÉANT Data Protection Code of Conduct (CoCo)

Resources in the [GÉANT Data Protection Code of Conduct \(CoCo\)](#) entity category declare to respect the CoCo's behavioral rules and that they are located in either EU/EEA or a country with adequate data protection (e.g. Switzerland).

The CoCo was created by [GÉANT](#), the international research infrastructure project that also created and operates [eduGAIN](#) and [eduroam](#). SWITCH contributes to GÉANT.

Release required attributes (default)

Provided a Resource is in the GÉANT Data Protection Code of Conduct entity category and attribute release for this entity category is enabled, an attribute is only released if its release scope is neither **nobody** nor **my organisation's resources**. Is the attribute release for this entity category disabled, only the default and specific release rules apply.

REFEDS Research & Scholarship (R&S)

Resources in the [REFEDS Research & Scholarship \(R&S\)](#) category "enhance the research and scholarship activities" and are of benefit to R&S user communities.

[REFEDS](#) specified this entity category. It is the interest group of research and education identity federations world-wide. SWITCH contributes to REFEDS.

Release minimal set of R&S attributes (default)

The minimal R&S attribute set includes the attributes:

- **Principal name**
- **E-mail**
- **Name (Given name and surname or alternatively Display name)**

The complete set with all R&S attributes additionally includes:

- **Targeted ID/Persistent ID**
- **Scoped Affiliation**

Is the attribute release for this entity category disabled, only the default and specific release rules apply.

3. Resource Specific Policies

Resource Specific Attribute Release Policy rules have always precedence over all other attribute release policies. Set or review the specific rules: [Resource Specific Attribute Release Policy rules](#).