

AAI Operations Committee



SWITCH

Serving Swiss Universities

SWITCHaai Team
aai@switch.ch

Bern, 16. September 2009

Agenda

10:10 –
11:20

- **AAI status update**
- **Shibboleth 2 Migration**
- **News about the Resource Registry**
- **Update on IdP Best Current Practices**
- **Update for the Attribute Specification**
- **AAA idea : Windows SSO for IdP AuthN**

Thomas Lenggenhager

Lukas Hämmerle

Halm Reusser + reviewers

Chad La Joie

Michael Hausherr

Lunch

13:50 –
14:50

- **GÉANT3: eduGAIN & Inter-Federation**
- **Bilateral Configurations across Federation Boundaries**
- **N-tier/Web Portal Use Cases**

Thomas Lenggenhager

Lukas Hämmerle

Chad La Joie

Coffee Break

15:10 –
16:45

- **Virtual Organization Platform & Library Use Case**
- **Shibboleth meets Buzzwords**
- **Persistent ID and its use for account checking**
- **AAI passwords as attribute for special use cases**

Thomas Lenggenhager

Chad La Joie

Lukas Hämmerle

Lukas Hämmerle

Slides at <http://www.switch.ch/aai/events/opcom-200909/>

AAI Status Update



SWITCH

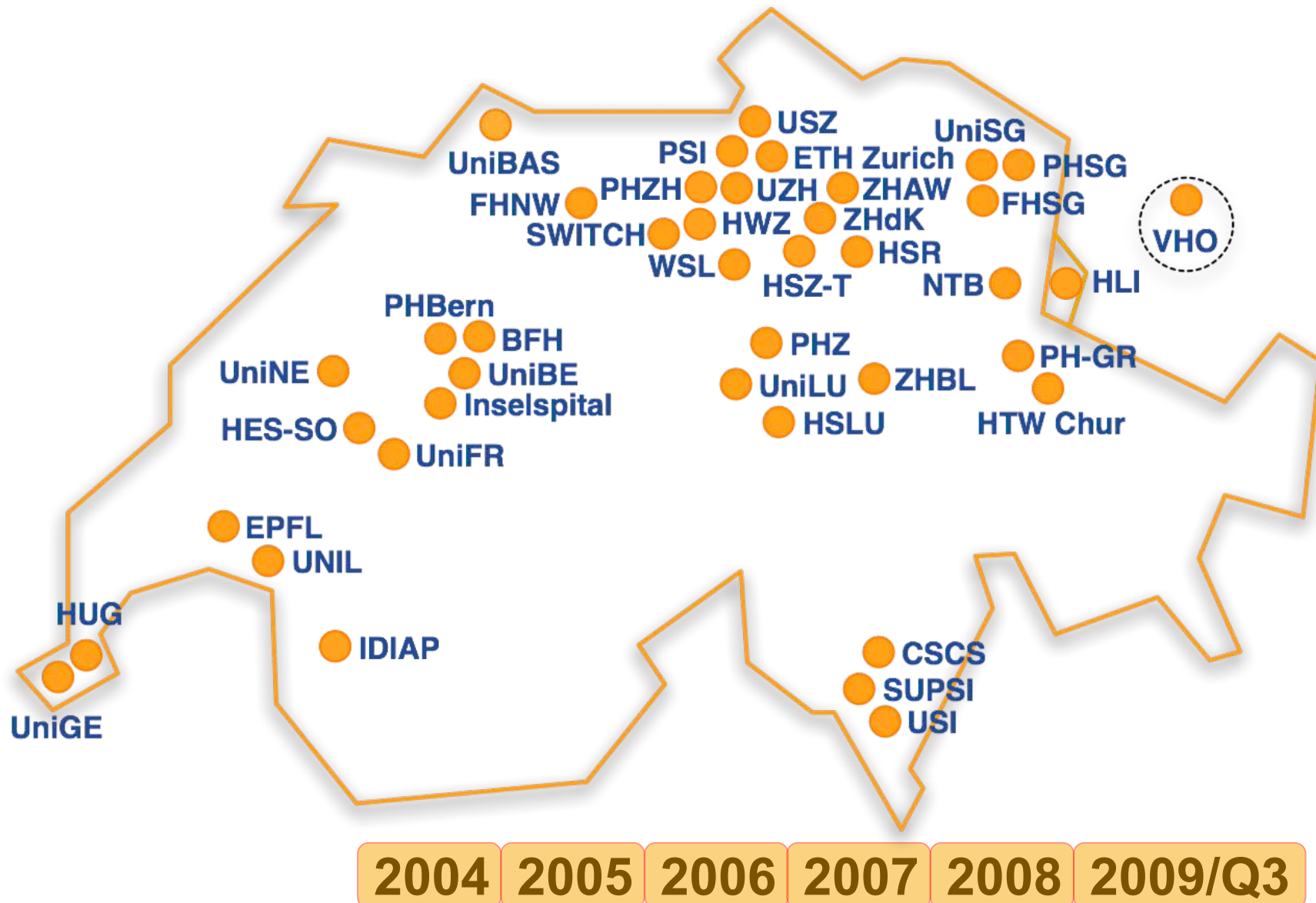
Serving Swiss Universities

Thomas Lenggenhager

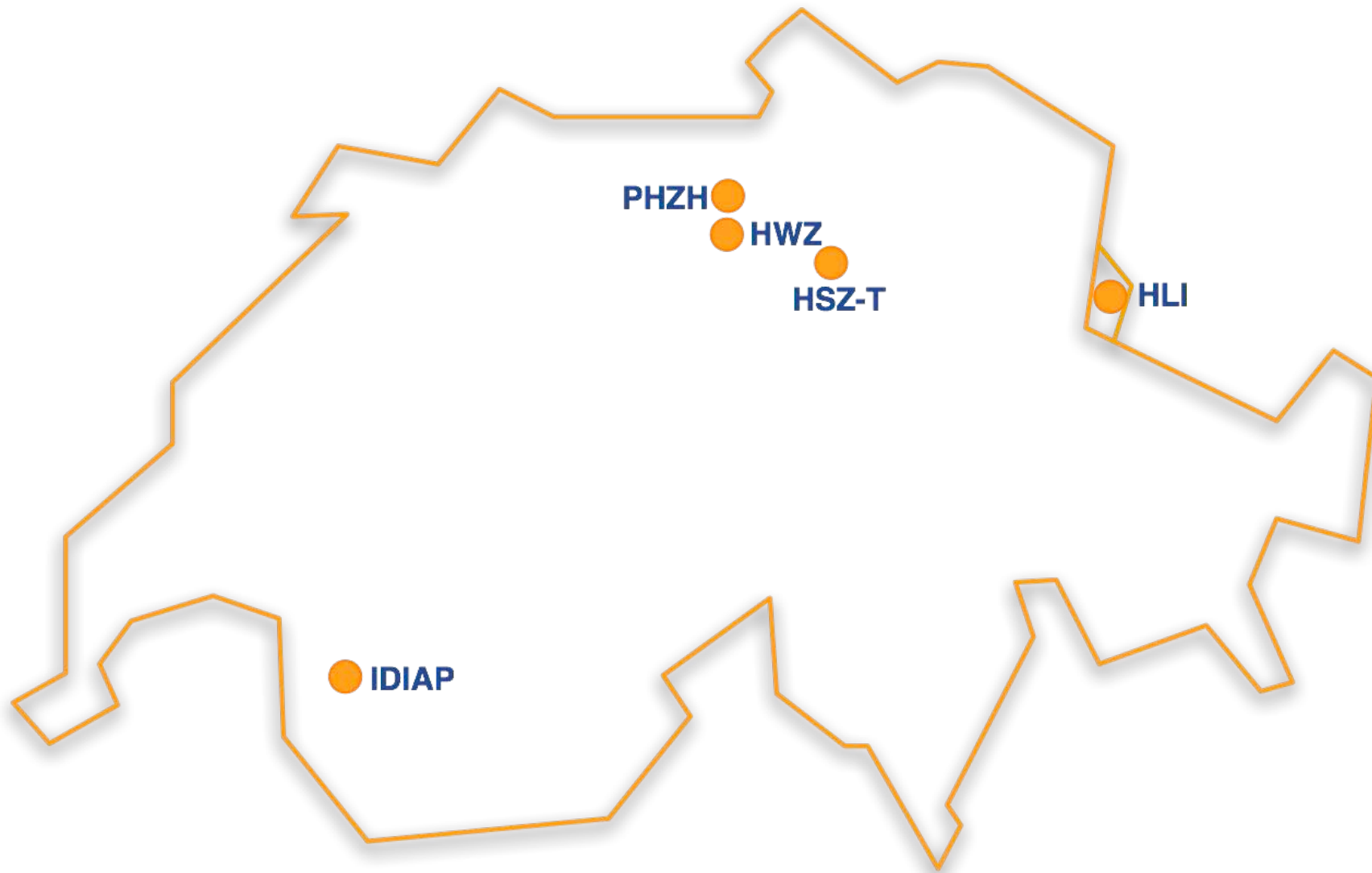
thomas.lenggenhager@switch.ch

Bern, 16. September 2009

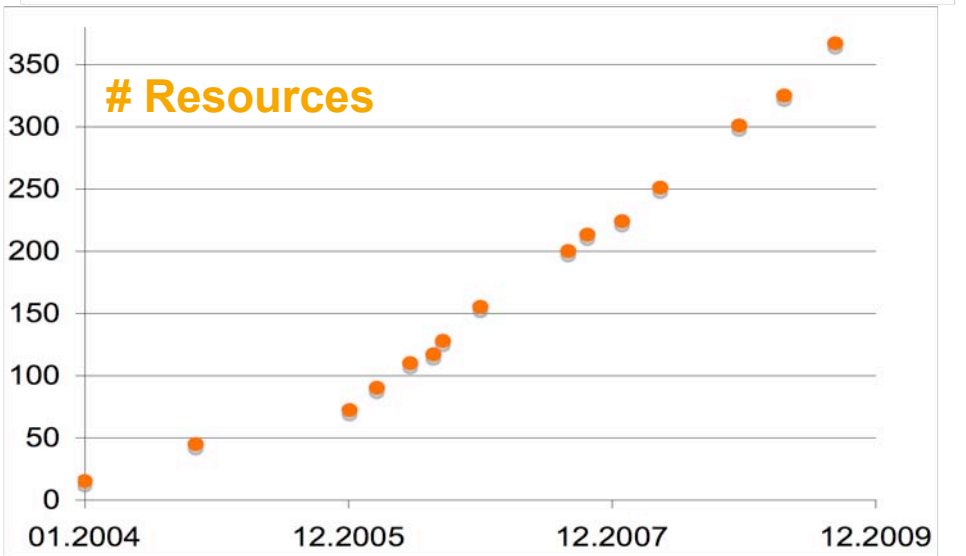
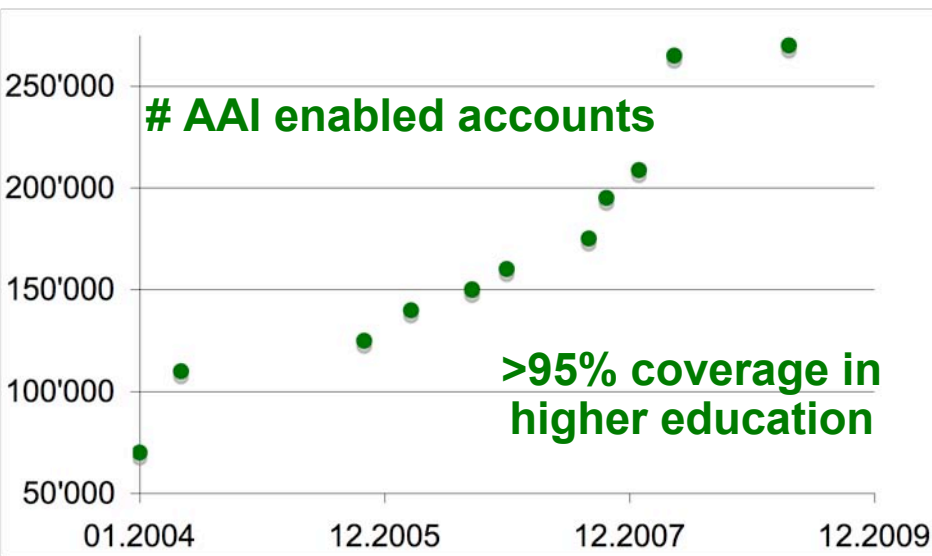
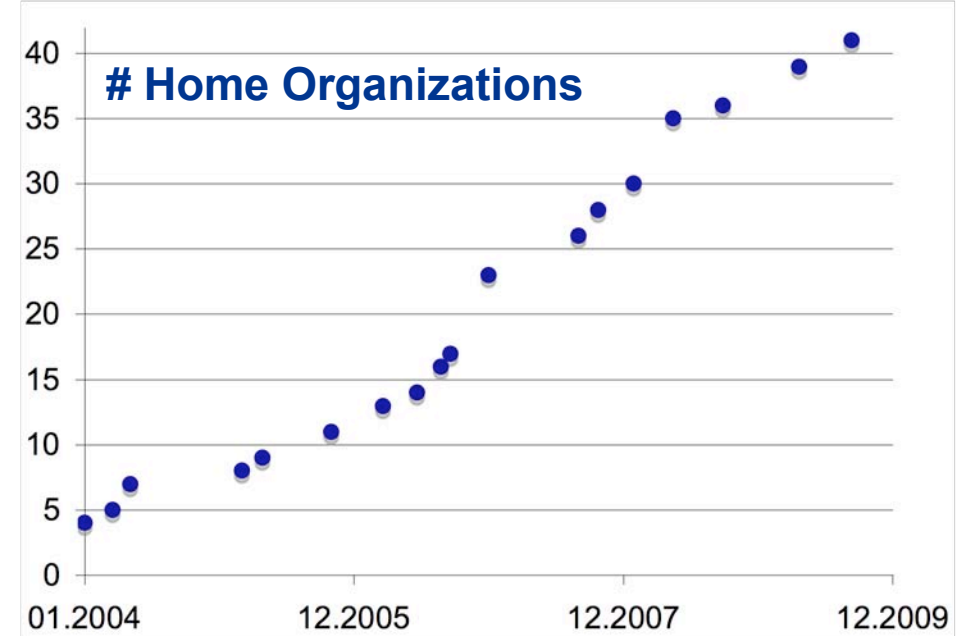
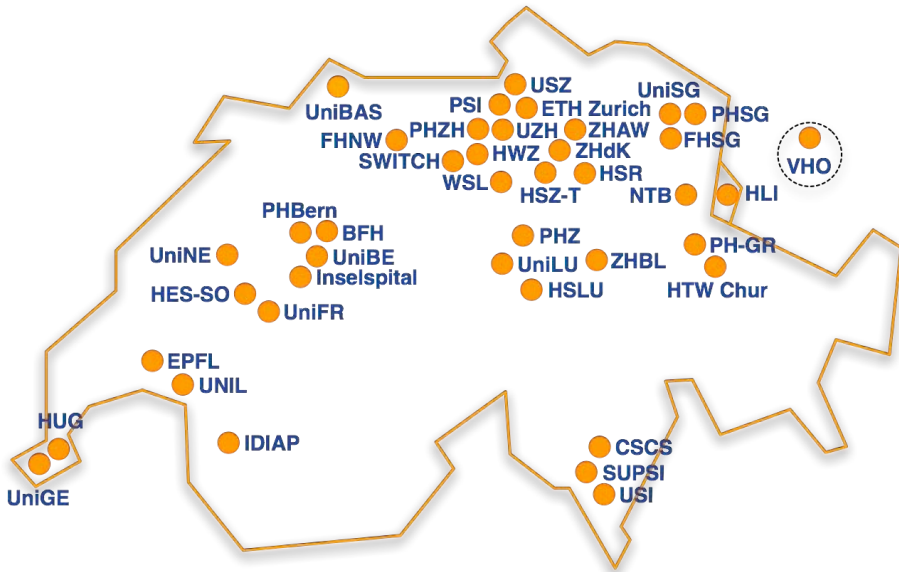
Growth of the SWITCHhai Federation



New IdPs in 2009

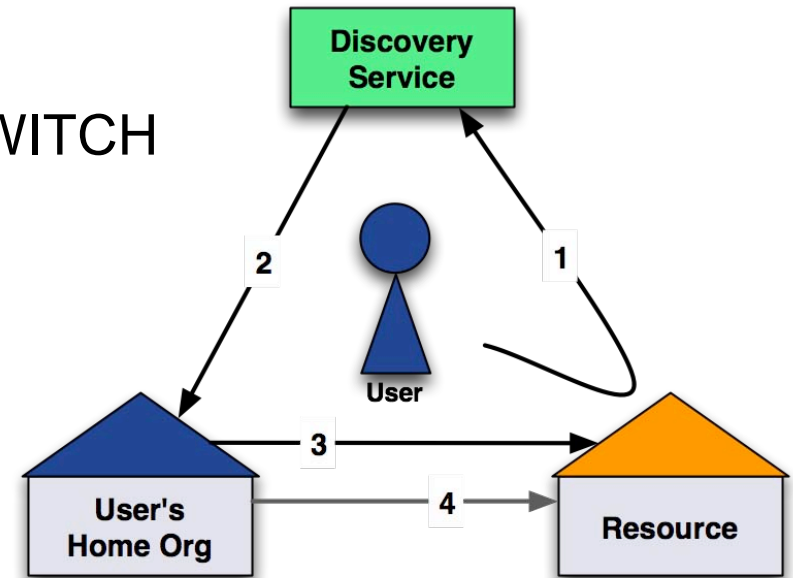


SWITCHaai Federation in Autumn 2009



Usage Statistics from the Discovery Service

- Central Discovery Service operated by SWITCH
 - Two redundant servers
 - one in Zurich
 - one in Lausanne
- Two mechanisms
 - Classic: well known drop down list
 - Embedded: customizable for own resources

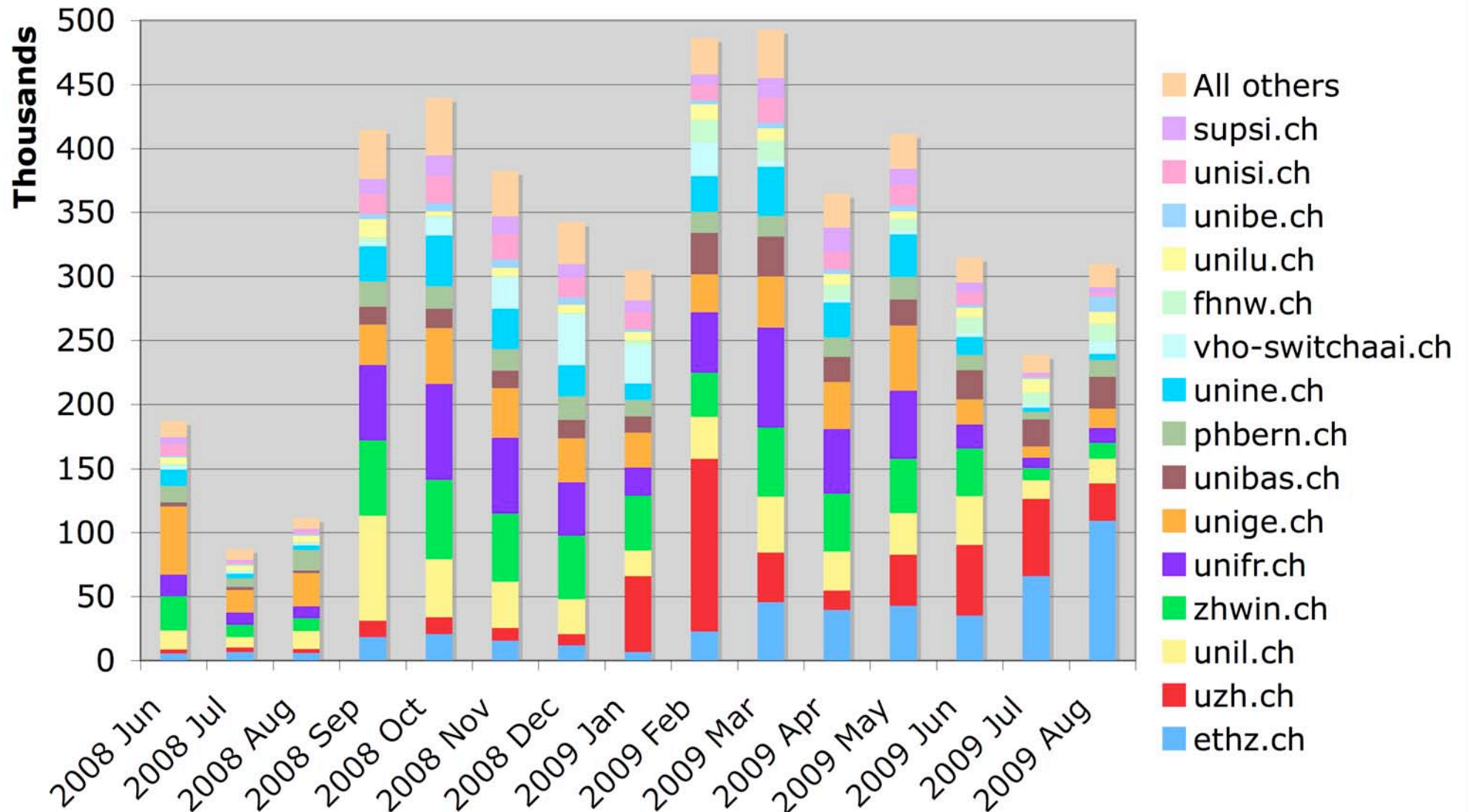


- Currently the only practicable way to collect some federation-wide usage data.
- On the basis of both DS server logs, an approximation is possible.
- **Remarks**
 - Some resources use their own discovery mechanism and are therefore not included in these statistics.
 - **OLAT uses embedded WAYF since mid August 2009.**

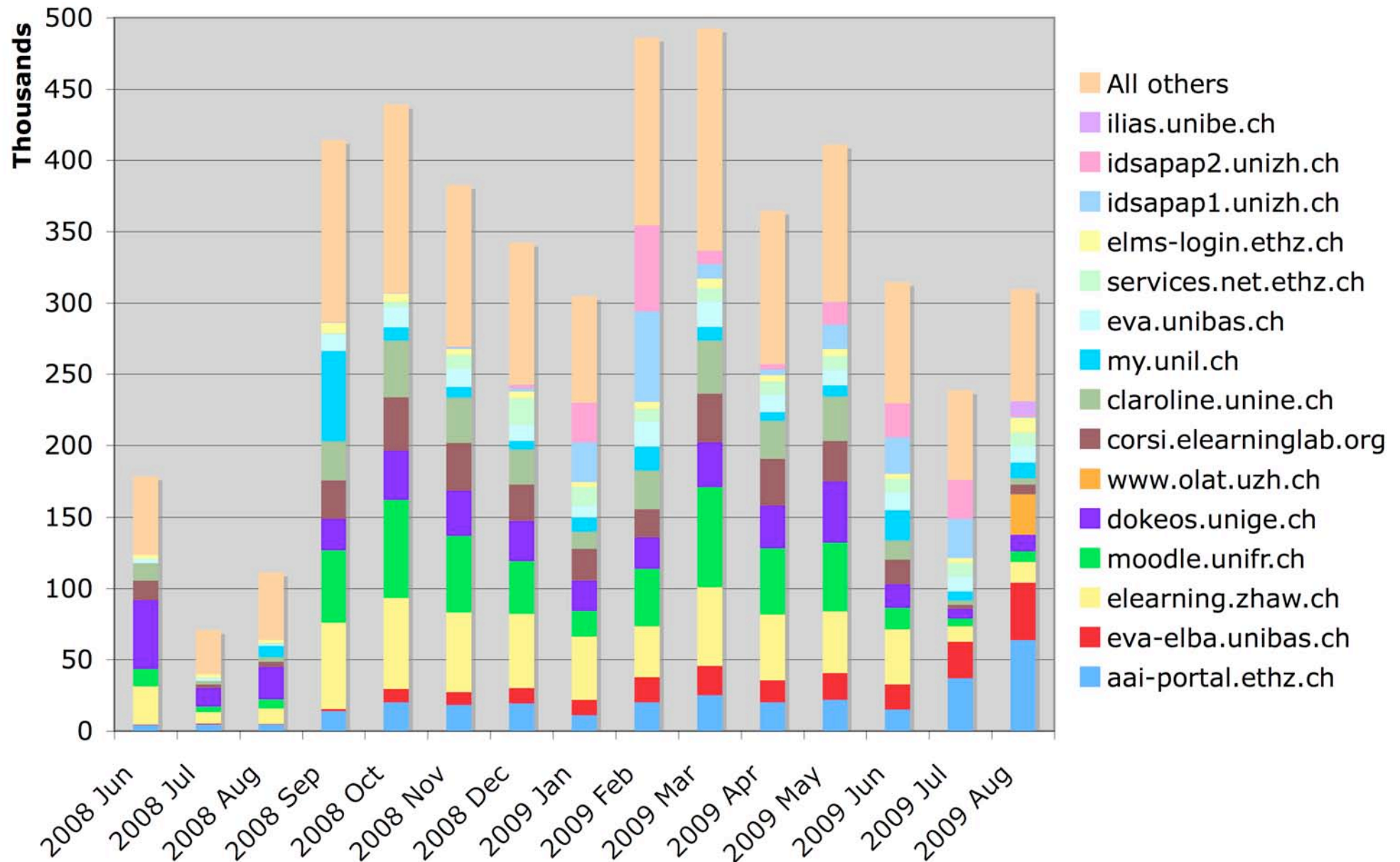
Discovery Log from Sept 2008 to August 2009 (1Y)

- Total number of resource accesses through the discovery service:
4'502'924
- Average resource accesses:
 - 12'336 per day
 - 514 per hour
 - 1 every 7 seconds
- Most busy day: Thursday, 11.9.2008 – 39'563 resource accesses
- Least busy day: Sunday, 11.1.2009 – 4 resource accesses

Top 15 Home Orgs on the Discovery Service



Top 15 Resources on the Discovery Service



Extending the Federation

- Guidelines as approved by SWITCH Executive Committee
 - SWITCH Community remains the core of SWITCHaai
 - Extension towards «Education System»
 - These institutions will operate IdPs and SPs
 - Others will still be able to join as Federation Partners
 - These institutions operate SPs

New Federation Partner Resources

Publishers

- + Dawsonera
 - + Dawson Books
- + Johns Hopkins University Press
 - + Project MUSE (not yet ready)
- + Universitätsbibliothek Freiburg
 - + ReDI (not yet ready)

Others

- + Apple Sales International
 - + Apple Neptun Store
- + Netenviron
 - + Community Services (not yet ready)
- + SAGW
 - + InfoClio

IdP Hosting as a SWITCH Service?

- SWITCH offered Jump-Start for IdPs
 - Only ZHW (now ZHAW) made use of it
- PHBern now asked for IdP Hosting as a service
- The AAI team evaluates options and costs
 - Identity Management would remain responsibility of the institution
 - If it looks feasible, it would become an optional service with a tariff
- Let us know if this could be of interest to you as well

TNC2009 Presentation: «Users are Easy»

- Project FLAME - Sponsored by JISC
 - Federated Local Access Management Environment
 - A series of social experiments, amongst a relatively sophisticated group of online service users.
 - Gained some interesting baseline measurements of the scale of the problems we face - which won't be solved by technology alone.
- John Paschoud, London School of Economics
 - http://tnc2009.terena.org/schedule/presentations/show.php?pres_id=31
 - *Slides (PPT)*
http://tnc2009.terena.org/core/getfile.php?file_id=309
 - *Study Report (PDF)*
http://tnc2009.terena.org/core/getfile.php?file_id=350
 - *Archived Stream*
<http://tnc2009.terena.org/media/archive.php?stream=3B>
- *Really worthwhile watching the stream!*